



South Australian Community Foundations

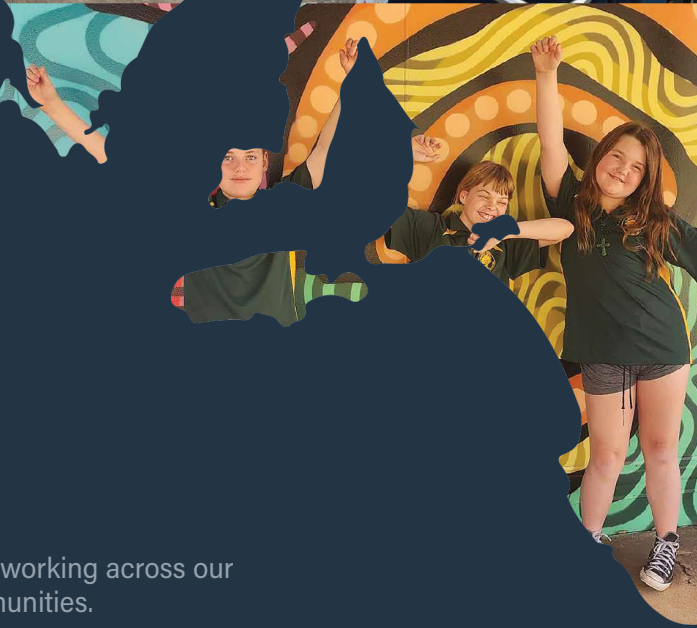
Platforms for change

We are South Australia's network of community foundations, working across our state to unlock the strength, vision and agency of local communities.

Every community has its own resources. From regional centres to inner cities, outer suburbs to country towns, there is always local knowledge and leadership, trusted relationships and networks in place, unique skills, ideas, and financial assets.

As community foundations, it's our job to harness these local resources, connecting them together in unique ways for transformative change.

On the Limestone Coast, the Eyre and Fleurieu peninsulas, the Barossa Valley, Greater Adelaide, Adelaide Hills and across South Australia, we're leveraging local giving with local ideas to build healthy, confident communities.



What is a community foundation?

The community's foundation

Community foundations are social infrastructure—platforms for communities to invest in their development, build their capacity, and determine their future.

At their core, community foundations create opportunities: for locals who want to contribute to their community; for charities and front-line organisations seeking support to deliver vital services; and for longer-term solutions to be realised through collective action. While each community foundation adapts to its local context, there are some key characteristics we share:

Transparent, collective governance

Community foundations offer a way for a community to govern and grow its own resources. Every community foundation is a public-facing, not-for-profit organisation registered with the Australian Charities and Not-for-profits Commission, with dedicated community members appointed transparently to volunteer boards.

Mobilising resources

Community foundations gather and organise the different, often invisible, pieces that are essential to creating lasting social change – the trust, relationships, and financial assets within a community. Agile grant-making, brokering and facilitating partnerships, and building community knowledge are some of the ways community foundations do this.

Agile and long-term

Responding rapidly and flexibly to community needs as they emerge and evolve is core community foundation practice. At the same time, community foundations benefit from a long-term horizon.

We use an endowment fund model to build an enduring resource for the community's future. Almost like a community superannuation fund—each year, every year, the local fund grows while the earnings from investment flow back into community. So while governments may change and industries shift, community foundations are durable structures built to support community vision over time.

South Australia's community foundation network



Stewarding **\$14m**
in community assets



\$1.5m given out
in scholarships since
inception



\$6.8m granted to
community since inception



4.4 FTE staff across all seven
community foundations in FY25



12,700 volunteering
hours in FY25

Why partner with a community foundation?

Many stakeholders partner with community foundations to create impact: government, private foundations, individual donors, collective giving groups and many more. Here are some of the reasons why:

- **Community governance:** The community in charge of its own future.
- **Non-commercial:** Everything stays in the community.
- **Local knowledge:** Solutions that last, owned and directed by local people.
- **Amplified impact:** Pooled resources go further.
- **Flexibility:** Future-focused funding that evolves with community need.
- **Collaborative:** Strategic partnerships that meet gaps and avoid duplication.
- **Strong relationships:** Invest in the networks of people that underpin resilient communities.
- **Nimble:** Flow resources quickly in times of crisis.
- **Accessible:** Meet the community at eye-level; everyone becomes a co-investor in local development.

Community foundations in action

360-degree view of community

The **Eyre Peninsula Community Foundation** has partnered with local care service Matthew Flinders Homes since 2017 to provide a permanent Home Hospice Service on the Eyre Peninsula.

The initiative provides out of hours in-home care to terminally ill patients, a service previously unavailable on the peninsula. To date, more than 100 Eyre Peninsula locals have been able to spend their last weeks in their own home.

The Eyre Peninsula Community Foundation manages funding for the service, and works closely with Matthew Flinders Home to steward the vision and ongoing operation requirements. Funding is mainly provided by the Foundation's volunteer-run second-hand community bookshop.



Rapid response

In the wake of severe floods that devastated the Riverland and Murraylands communities in 2022-23, **Foundation SA** moved quickly to establish the South Australian Disaster Recovery Fund to raise funds for flood-impacted communities.

The Fund pooled contributions from local community members with additional support from four prominent philanthropic foundations. A total of \$87,000 was raised to support organisations working within impacted regions to deliver programs for community and environmental recovery, building resilience for the future.

Trusted broker

On the Limestone Coast, the **Stand Like Stone Foundation** is a long-standing, trusted broker between external funding partners and high-impact community projects.

Over a ten-year partnership with OneFortyOne, a Mt-Gambier-based Trans-Tasman business, the Foundation has stewarded \$380,000 to 40 projects that the local community identified as important. One such project "I made it" was developed to give women from Africa and Burmese backgrounds the opportunity to learn how to produce items for the Australia market. This project taught small business management skills and also provided the opportunity to improve their conversational English language skills.

The Foundation works hard to lower barriers and maximise participation from community, organising the call-out to apply for project funding, and processing and distributing the grants every year.



Photo by Kate Hill

Partnering for impact

With youth homelessness growing at alarming rates across the region, **Foundation Barossa** facilitated and funded a collaborative community response, drawing on the expertise of three local service organisations. The program 'A Roof for Our Youth' provides at-risk young people with stable studio accommodation on the property of their family or carer. The preventative approach aims to give young people the space and independence they need to grow and study, while keeping them connected to support systems.

Foundation Barossa facilitated local contributions of over \$210,000 to support the program, and is now helping to organise community giving and problem solving around homelessness more broadly in the region, by developing a permanent fund dedicated to supporting longer-term, systemic solutions.



There for the long-haul

From 2020 to 2022, the **Fleurieu Community Foundation** collaborated with Junction Australia and The Wyatt Trust to deliver a Homelessness Early Intervention program across the Fleurieu Peninsula.

The initiative used outreach, counselling, access to housing resources, financial assistance, and community support services as proactive and preventative measures to individuals and families at risk of homelessness. Initially jointly funded with The Wyatt Trust, the Fleurieu Community Foundation continued to fully fund the program for its last 12 months.



SA's growing network of community foundations

We are local and networked

While each community foundation has its local focus, we are connected to each other as a network across the state. We learn from each other, share resources and support, and look for new ways to collaborate for collective good.

We are also connected into the Australia-wide community foundation network, as well as the growing global movement of over 2000 community foundations. From Romania to Kenya, Haiti to Chile, community foundations are building just and equitable futures at ground level.

South Australian Community Foundations Initiative (SACFI)

The South Australian Community Foundations Initiative (SACFI) represents a unique, collaborative approach to strengthening community philanthropy across the state. Established in 2024 as an informal network of community foundations, SACFI has evolved into a connected hub for relationship building, knowledge sharing and resource alignment. Guided by shared values, we are working together to grow a coordinated, place-based movement—unlocking opportunities for collaboration and driving greater impact for communities across South Australia.



Unlocking and amplifying local generosity to support community-led change.

foundationsa.org.au



South Australia's newest community foundation.



An Indigenous-led fund for South Australia.

spinifexfoundationsa.com.au



Inspiring community kindness and courage.

standlikeastone.com.au



Facilitating and supporting active community-focussed philanthropy on the Eyre Peninsula.

epcf.au



Enabling community philanthropy for the social, cultural and economic prosperity of the Barossa.

foundationbarossa.org.au



Building a stronger and more resilient Fleurieu community.

fleurieucommunityfoundation.org.au



A hub for community foundation efforts across South Australia.

linkedin.com/company/sacfi-south-australian-community-foundations-initiative/



Community Foundations Australia supports, catalyses and connects Australia's network of community-led philanthropies.

cfaustralia.org.au