



A Community Foundation for  
SOUTH AUSTRALIA

# FOUNDATION SA

YEAR IN REVIEW 2022

**VOLUNTEER**

FOUNDATION SA  
IS FROM OUR COMMUNITY,  
AND FOR OUR COMMUNITY.

# OUR FIRST YEAR



When we launched Foundation SA in May 2021, we set three key priorities for our first 12 months: grow our corpus, consult with community to develop our strategy, and distribute funds through both sub-funds and our own grant round.

And that is exactly what we did.

**Corpus growth** – At the end of the 21/22 financial year we had 18 sub-funds in the Foundation SA community with a total corpus of over \$1.2m invested and growing. These sub-funds are held by a range of families, individuals, giving circles and businesses who all have a common goal, to have long-term impact on the causes they are passionate about.

**Strategy** – Our wonderful community from far and wide helped us to finalise our strategy in a ‘plan on a page’ and this will drive our focus for the coming years. Read more about the strategy [here](#).

**Grants** - The successful Neighbourhood Grant projects from our first grant round all demonstrated community led projects with an opportunity for connection. Three of our sub-funds also made their first grants to causes across South Australia.

The following provides a snapshot of our first year of operations and we thank every community member who has contributed to the development and growth of Foundation SA.



**Stacey Thomas**  
Chief Executive Officer

## 2021/2022 HIGHLIGHTS

### OUR COMMUNITY OF DONORS

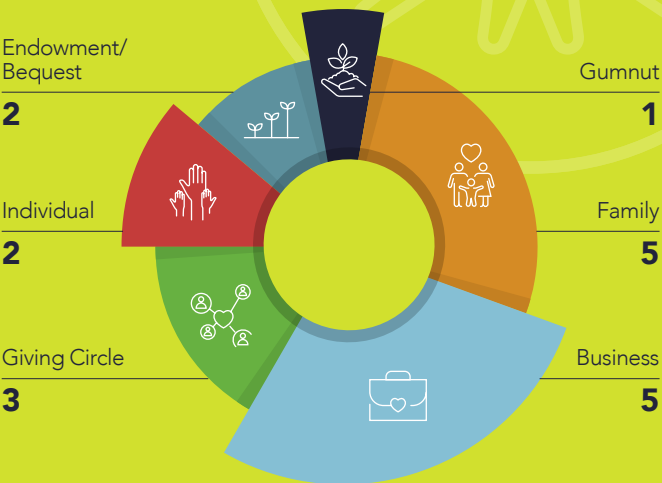
We have a range of donors who have created named sub-funds using our flexible giving structure.

//

*We’d been wanting to formalise our corporate giving but were unsure of the best structure. Foundation SA’s sub-fund model enables us to invest our donations for long term growth while also managing all fundraising administration and reporting through a secure online portal.*

//

Adrian Cercez, Chief Executive Officer, ChemSupply Australia.



## OUR CORPUS GROWTH

Foundation SA is building a perpetual corpus. This means funds donated today are responsibly invested for long-term growth and returned to the community for years to come.

Corpus growth comes from:

- Our sub-fund holders contributing to their funds
- General donations to Foundation SA
- Investment returns

Donations are tax-deductible.

## OUR IMPACT ON COMMUNITY

General donations from the public go towards community projects through the Foundation SA Grants Program.

### Neighbourhood Grants

Our first Neighbourhood Grants round was held in May 2022 and granted \$10,000 to local community organisations strengthening their neighbourhoods.

#### Hands of Hope

**Foundation Incorporation -** Social Connections Groups for survivors of family and domestic violence run in conjunction with **Women's Safety Services SA**

#### Junction Australia's

Community Champion Project – engaging neighbourhoods in the Marion area in a variety of activities led by volunteer community champions.

#### Kensington Residents

**Association** connecting to Country program will engage with Kaurna Leaders to revitalise and share the deep time culture, language, wisdom and knowledge of the area with the local community.

#### Marino Community Garden

– providing infrastructure to enable year-round learning and social activities at this volunteer run, open access, community garden.

#### Villagehood Australia

'Singing Hearts', a mindful singing & music program that brings women together to experience moments of joy with their children.



Marino Community Garden

In addition, we had one of our sub-funds support the **Youth Inc – Future Pathways** inspiring cultural and creative industry pathways program. This is a great outcome and demonstrates the benefits of community foundations connecting funders to grass-roots projects.

## GRANTS FROM OUR SUB-FUNDS

We also facilitated three grants from our sub-funds, totalling \$12,000. These grants were given directly to organisations of their choice.

Examples of these organisations included: Tjindu Foundation, St Vincent De Paul Society (SA) and Whale & Dolphin Conservation Australia.



## OUR VISION AND MISSION



### OUR VISION

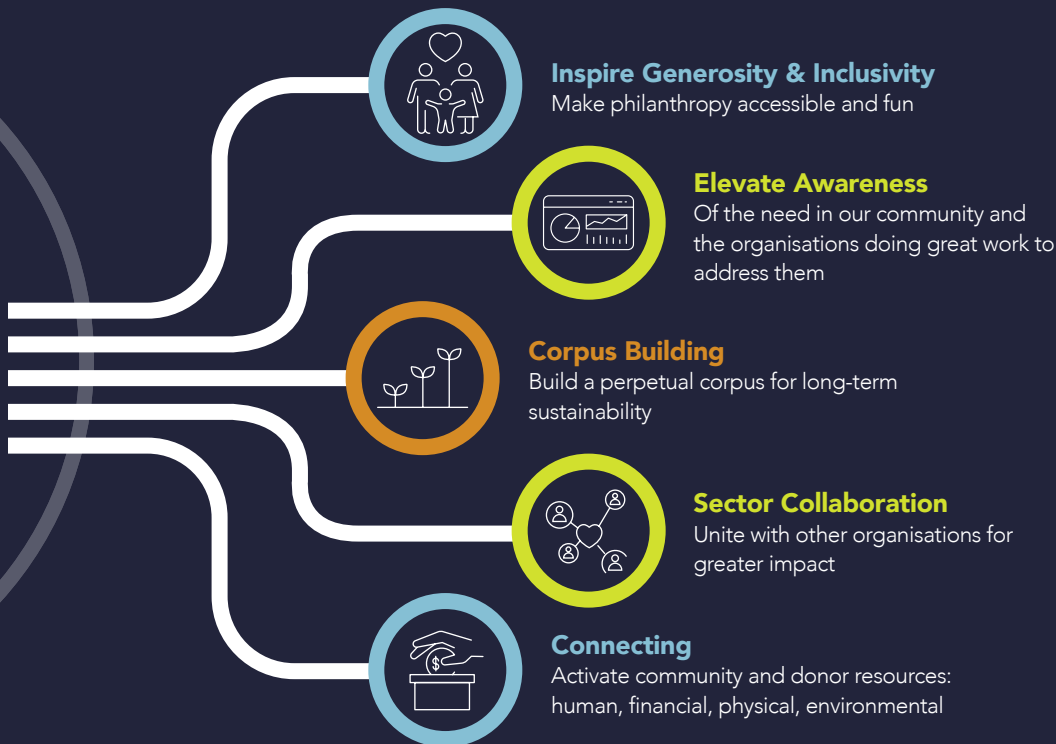
A connected, resilient, sustainable South Australia where everyone belongs.

### OUR MISSION

Inspire generosity and inclusivity, strengthen the local non-profit sector and create a permanent endowment to support the current and future needs of our community.

### HOW WILL WE ACHIEVE THIS?

Our commitment is to focus on the following 5 activities to achieve our mission.



## OUR IMPLEMENTATION PARTNERS



Contact information

t. +61 8 8223 3597  
e. [hello@foundationsa.org.au](mailto:hello@foundationsa.org.au)  
w. [www.foundationsa.org.au](http://www.foundationsa.org.au)